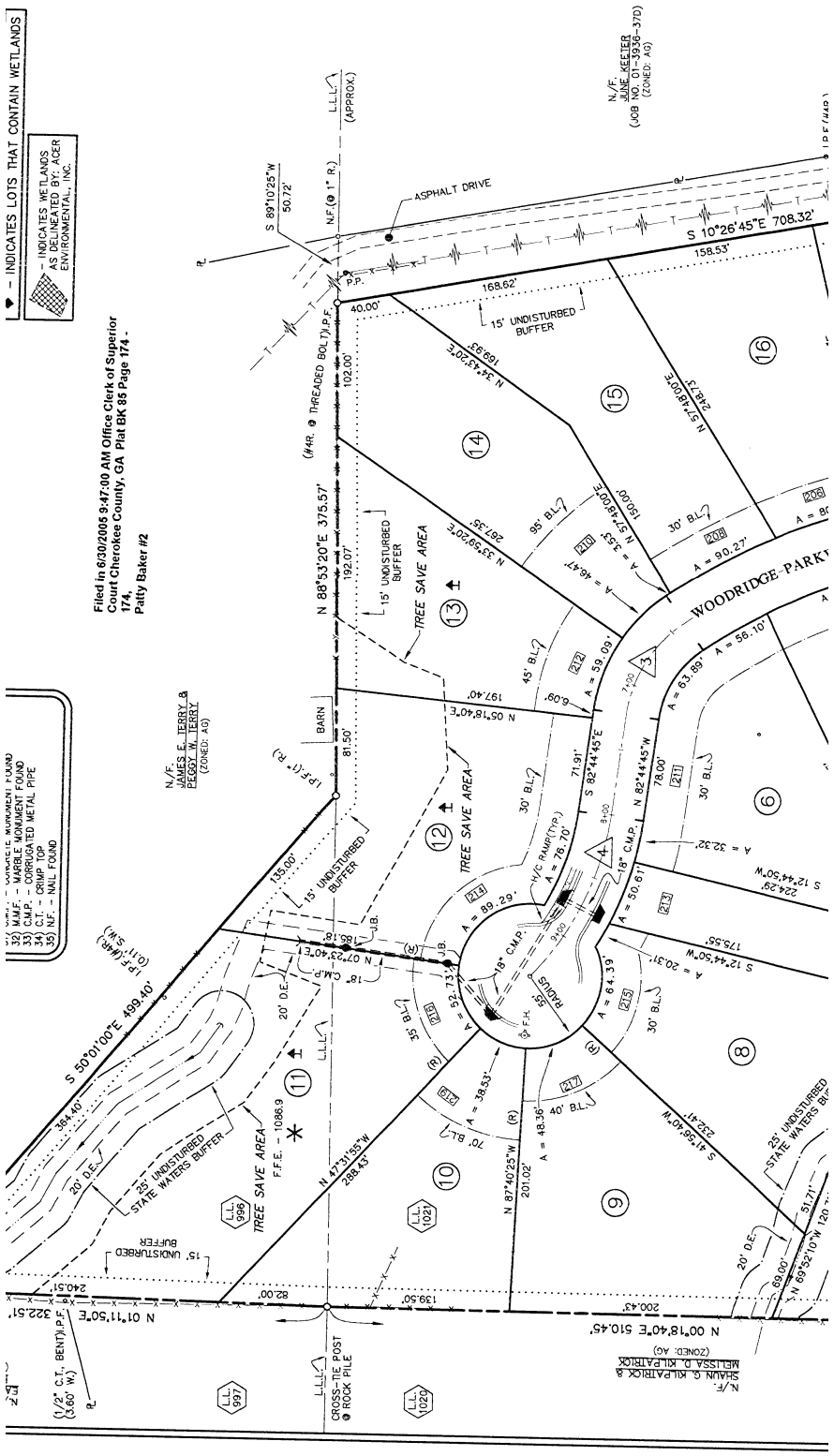


- 32) M.F.F. - MARBLE MONUMENT FOUND
- 33) C.M.P. - CORRUGATED METAL PIPE
- 34) C.T. - CRIP TOP
- 35) N.F. - NAIL FOUND

INDICATES LOTS THAT CONTAIN WETLANDS  
 INDICATES WETLANDS  
 DELINEATED BY ACER ENVIRONMENTAL, INC.

Filed in 6/30/2005 9:47:00 AM Office Clerk of Superior Court Cherokee County, GA Plat BK 85 Page 174 - Patty Baker #2



N/E JAMES E. TERRY & EGGY W. TERRY (ZONED: A0)

N/E SHAWN G. KILPATRICK & MELISSA D. KILPATRICK (ZONED: A0)

N/E JIM KEENER (ZONED: A0) (JOB #08-370)

19 F (Map)